

PERFORMANCE FREERIDE + WAVE | LW

## BIG AIR MACHINE

Unadulterated, Delta Bow power. Five, ExoTex equipped struts for rock solid stability. And Intelligent Arc for control in the gusts and power in the lulls. The king of hangtime.

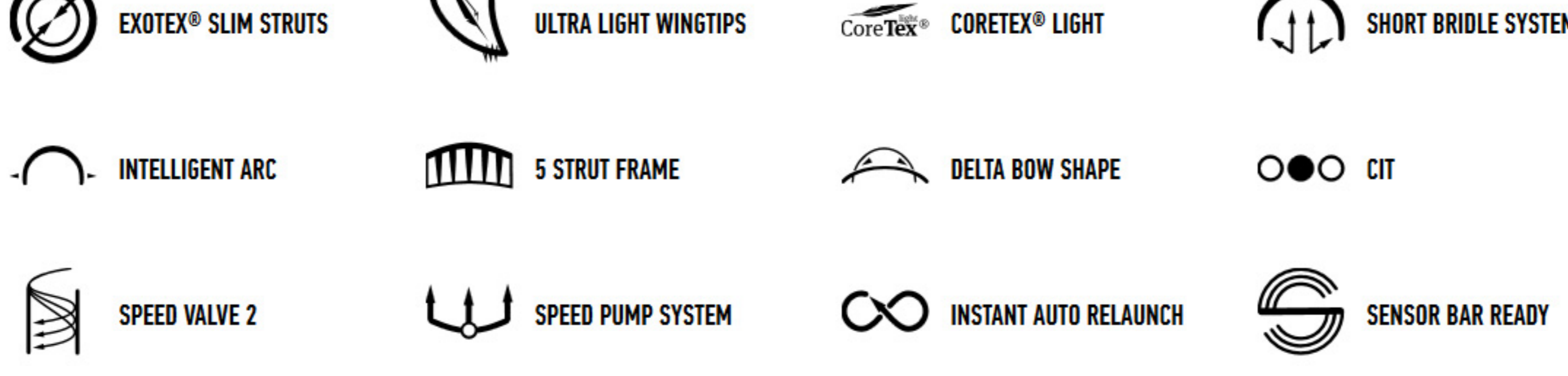
Strong like bull.

Don't let those warm, sunny, puffy wind days keep you off the water. The powerful XR4 LW edition will get you on the water first. And will keep you upwind from the rest of the pack.

The XR4 LW's DNA is packed with technology to make every light wind day, a day to remember. Like our new ExoTex Dacron which allows us to improve airflow by reducing leading edge and strut diameters. Despite reducing strut diameters, our new design is more stable and agile in flight. For snappy turns. And endless smiles. This is the new XR4 LW edition. Now available in stunning black or original, awesome white.



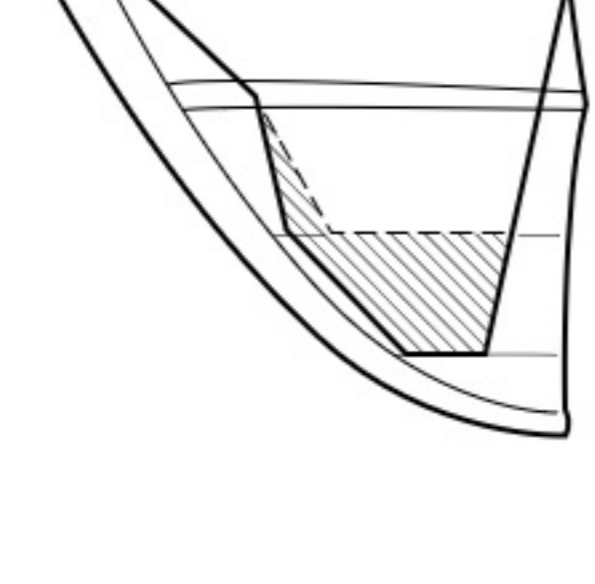
## FEATURES



## KEY FEATURE SNAPSHOT

## EXOTEX® SLIM STRUTS

Slim is good. The new ExoTex Dacron gives our engineers new design flexibility. For example, this ultra strong Dacron structure is so unique it allows us to increase strut pressure and reduce strut diameters in the XR4 LW. Thinner struts are more flexible which delivers better reflexivity and therefore quicker turn ins. And finally, thinner struts improve aerodynamics thereby allowing the kite to point higher.

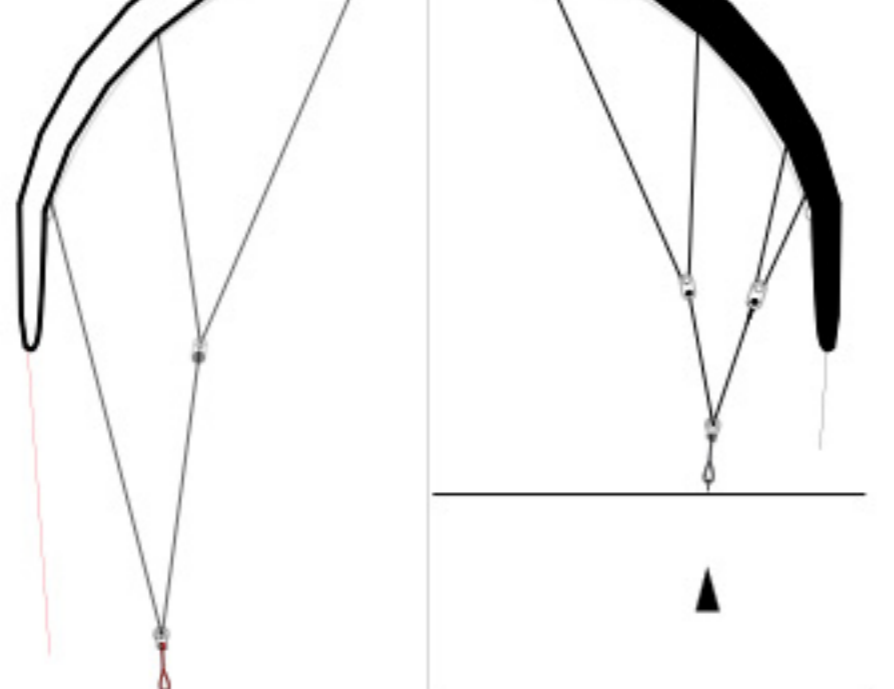
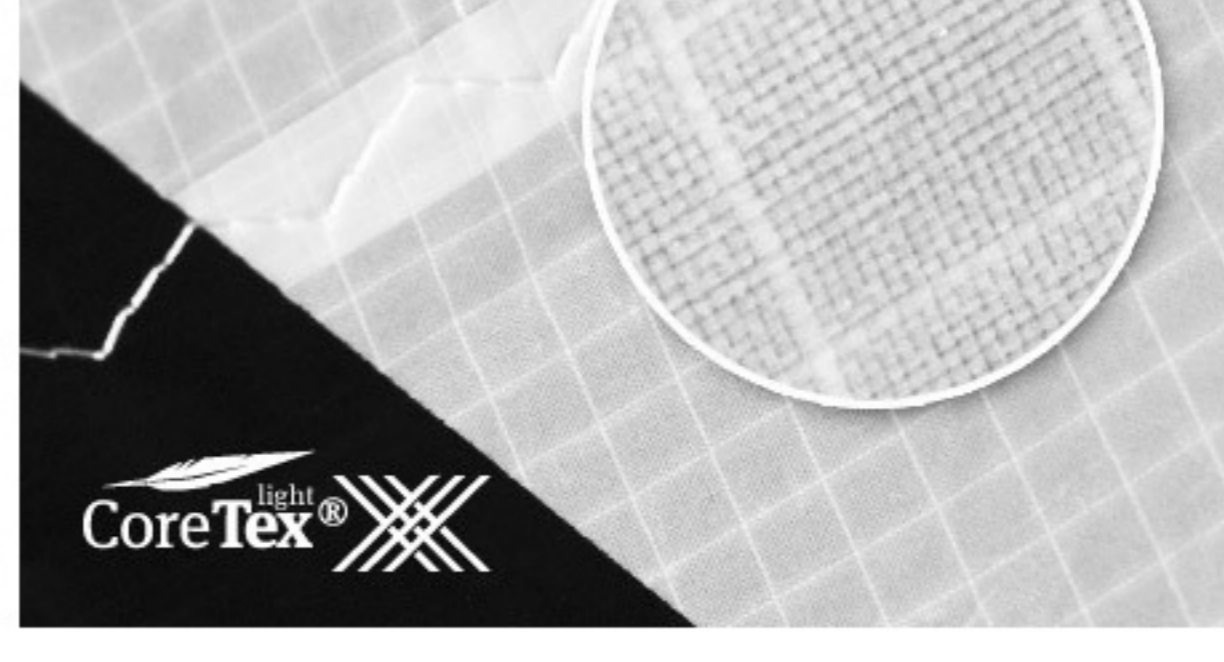
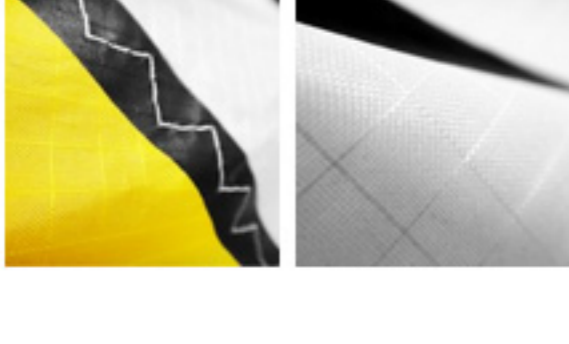


## ULTRA LIGHT WINGTIPS

The new ExoTex Dacron gave our engineers the freedom to redesign the wingtips with less material without compromising durability. Less material equals less swing weight. Less swing weight means faster turns.

## CORETEX® LIGHT

Exclusive to CORE. Just a little lighter. Our, industry leading, ripstop canopy fabric is just as durable as the original CoreTex yet sets new benchmarks in breaking strength, tear resistance, longevity and UV protection. Feel the light, crisp signature only a CoreTex Light Kite delivers.



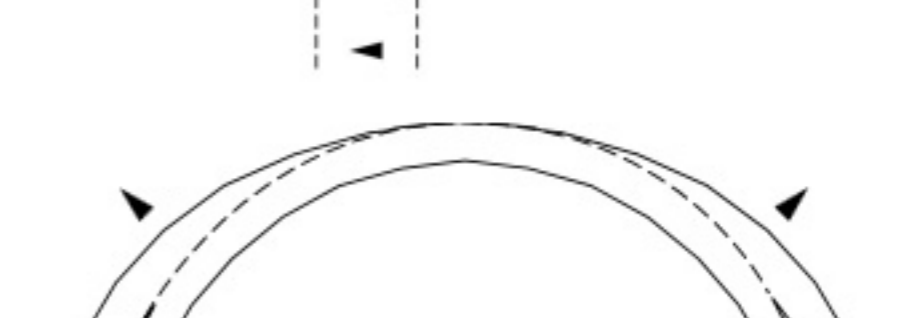
## SHORT BRIDLE SYSTEM

Short and sweet. The super short bridle system improves feedback so you can better feel your kite position. For precise, tight pivot turns. In the larger kite sizes, this reflexivity increases even more so. Just imagine a kite that practically anticipates every turn, as if it's hot wired to your brain. This is the new XR4 LW.



## INTELLIGENT ARC

Intelligent Arc is a bridle configuration that modifies the airflow on demand in a linear and direct way. Like a bird that spreads its wings to generate more lift, the XR4 LW increases its wingspan with a pull on the bar. Likewise, sheeting out makes the kite fold in its wings and depower. Given that Intelligent Arc can change the XR4 LW's projected surface area by 10 percent, it delivers more control for higher reaches in marginal winds.

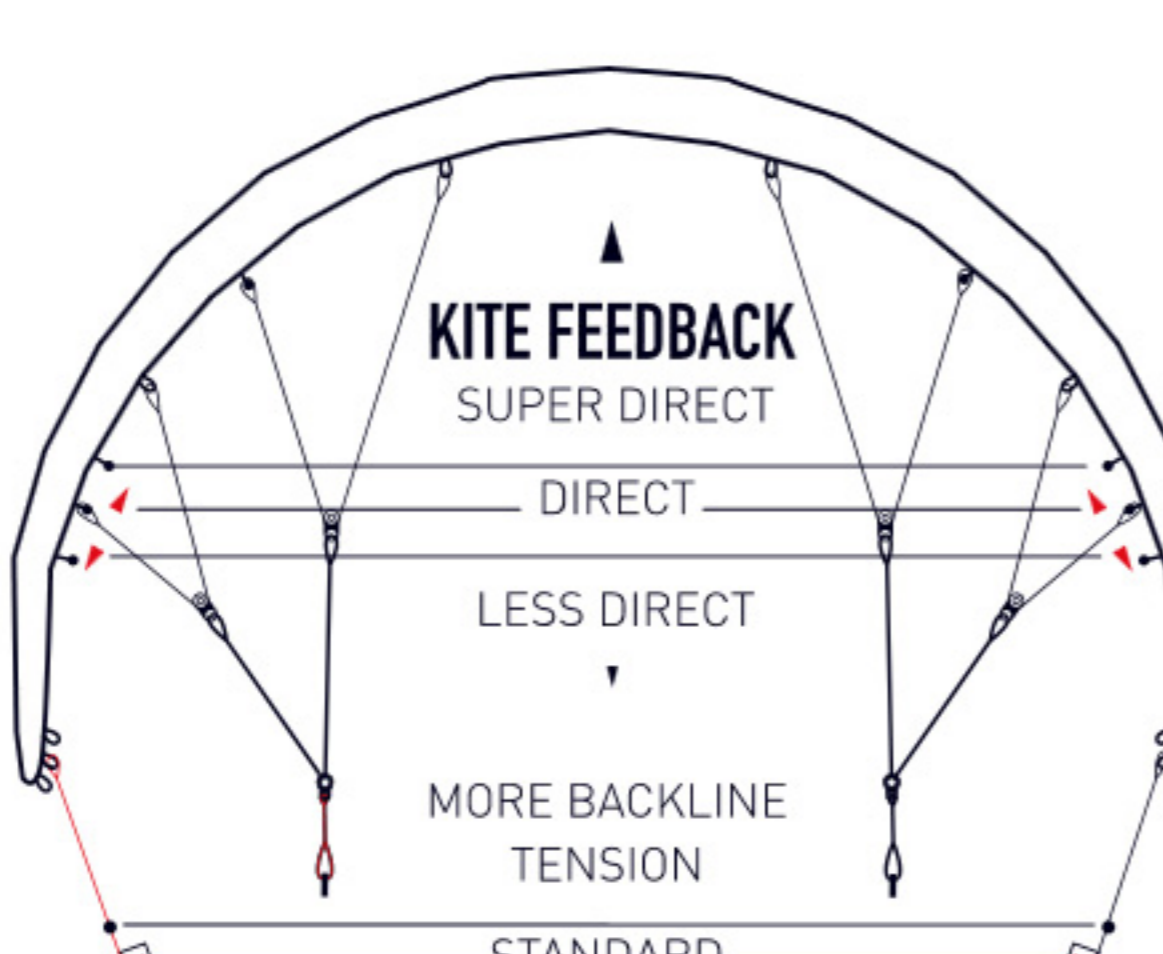


## 5 STRUT FRAME

The classic, bombproof, 5 strut exoskeleton frame is a critical component in the XR4 LW design to stabilize the additional lift created by the bigger sizes.

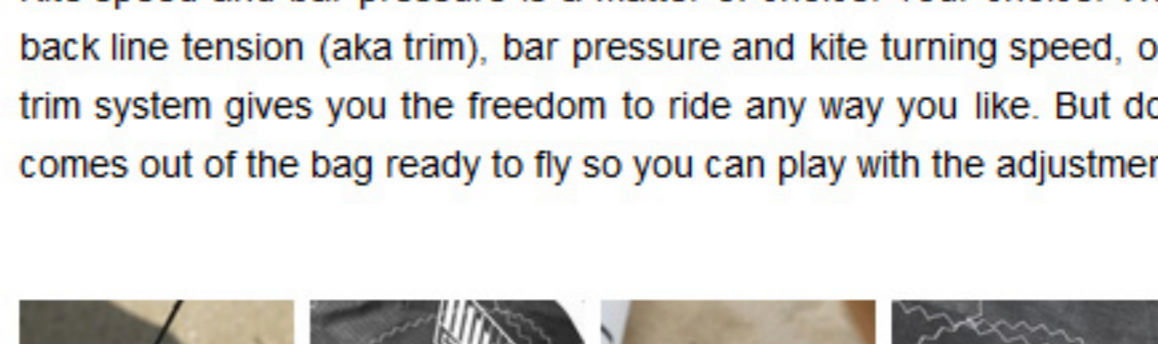
## DELTA BOW SHAPE

The XR4 LW incorporates the concave trailing edge of a traditional bow kite and swept back wings of a delta kite. Our airfoil is engineered to rip upwind when underpowered, boost bigger on demand and get you planing first!



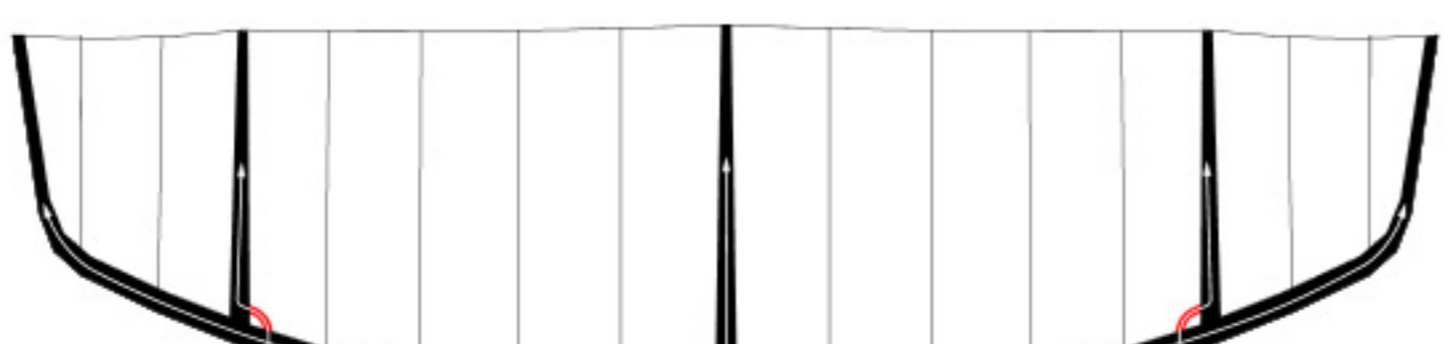
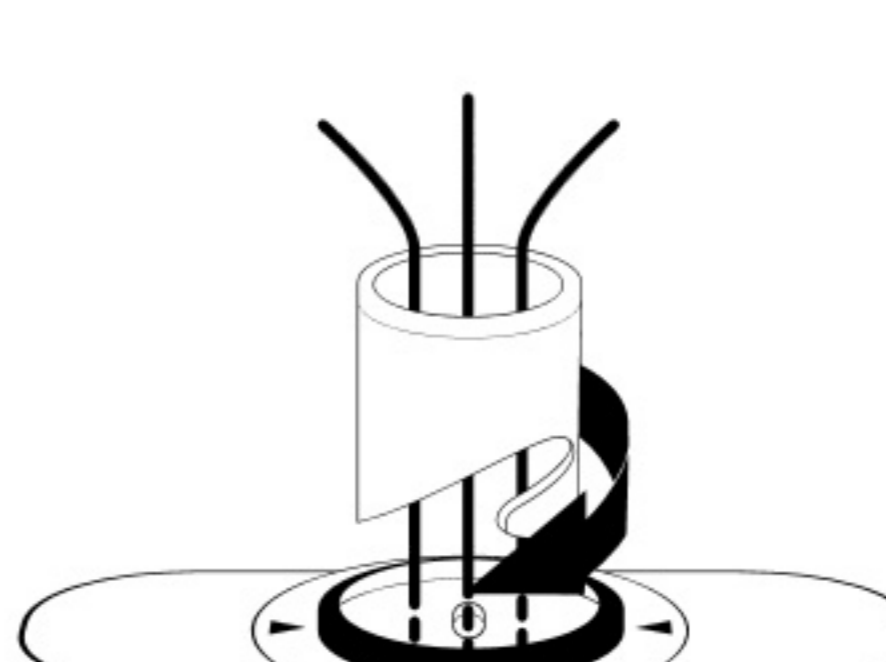
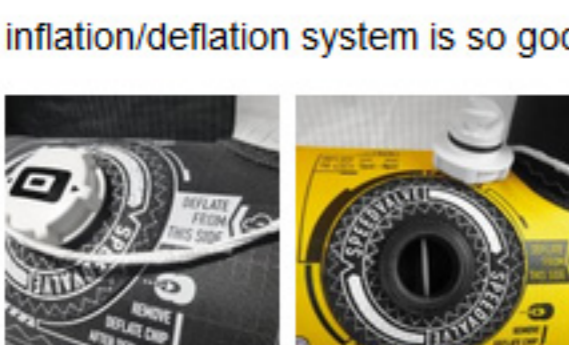
## CORE INTELLIGENT TRIM SYSTEM (CIT)

Kite speed and bar pressure is a matter of choice. Your choice. With fully adjustable back line tension (aka trim), bar pressure and kite turning speed, our quick adjusting trim system gives you the freedom to ride any way you like. But don't worry, the kite comes out of the bag ready to fly so you can play with the adjustments later.



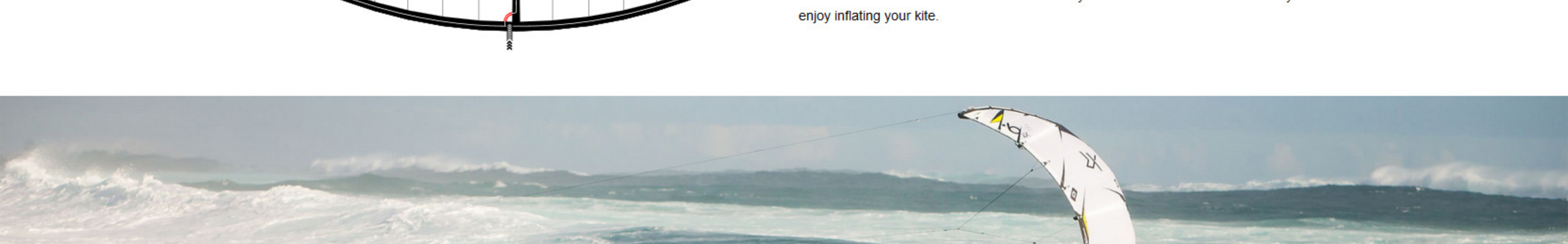
## SPEED VALVE 2

No special hose adapter needed here! The Speed Valve 2 connects directly to any standard 20mm OD twist lock pump hose. The Speed Valve 2 maximizes airflow, minimizes inflation times and noticeably reduces pump pressure. This inflation/deflation system is so good you may even leave your electric pump at home.



## SPEED PUMP SYSTEM

Supersonic inflation! We re-routed the speed-pump strut distribution hoses to make air flow faster into the struts. We did this for you because we know how much you enjoy inflating your kite.



## INSTANT AUTO RELAUNCH

Instant relaunch really is instant! The XR4 LW delta bow shape is designed to immediately drift into a perfect relaunch position whenever the bar is released. Riders will also appreciate how easily the kite releases from the water during waterstarts.



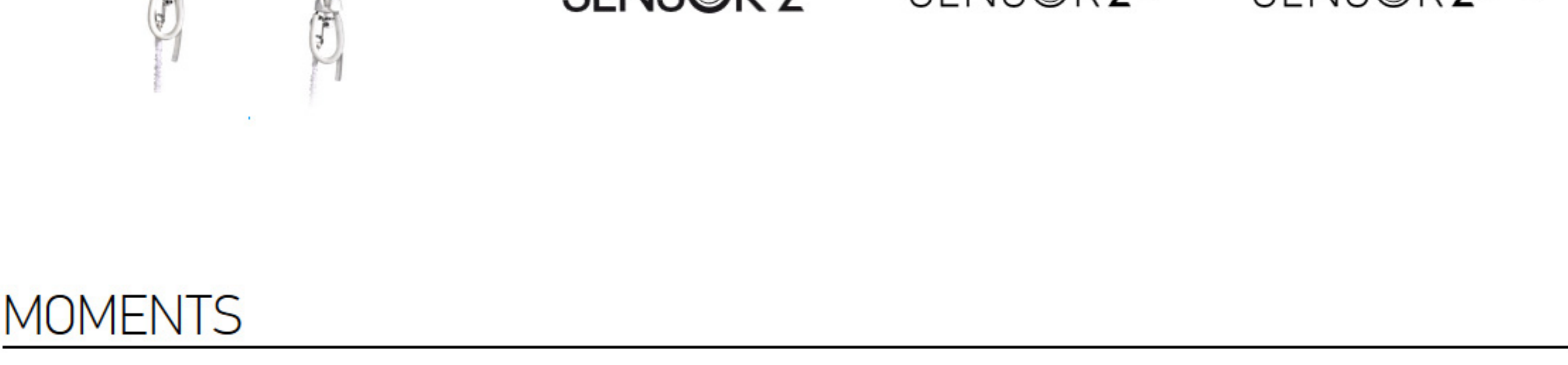
## SENSOR BAR READY

The XR4 LW is fully compatible with the Sensor 2 and Sensor 2S bar system which features precise kite control and our unparalleled Supported Single Frontline Safety (SSF) system. The super clean design has no bobbles to interfere with your style and the ingenious no sag flag/safety line is more aerodynamic (and looks better).

MORE SENSOR BAR SYSTEM AWESOMENESS!

SENSOR 2    SENSOR 2S    SENSOR 2S PRO

## MOMENTS



## STYLEFINDER + SKILL LEVEL

	XR4	FREE	GTS4	SECTION	IMPACT
Freeride   Easy Riding	●●●●●	●●●●●	●●●●●		
Big Air   Hangtime	●●●●●	●●●●●	●●●●●		
Freestyle (hooked)	●●●●●	●●●●●	●●●●●		
Wakestyle (unhooked)	●●●●●	●●●●●	●●●●●	WAVE	WAKESTYLE
Kite-loops	●●●●●	●●●●●	●●●●●		
Wave	●●●●●	●●●●●	●●●●●		
Race   Upwind	●●●●●	●●●●●	●●●●●		

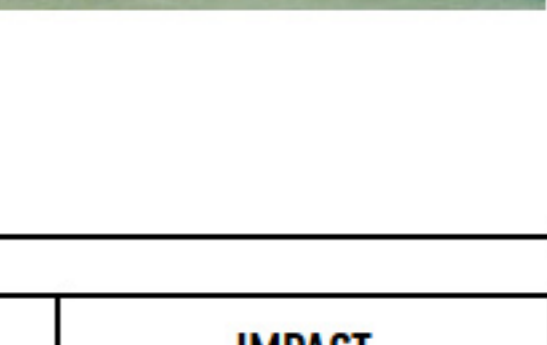
## RANGE/PRICES

	BFT	KTS	PRICE*
XR4 LW 15.0	3-5	8-20	1749 EUR
XR4 LW 17.0	2.5-5	7-19	1849 EUR
XR4 LW 19.0	2.5-5	6-18	1949 EUR
Sensor 2	all	all	459 EUR
Sensor 2S / 2S+	all	all	499 / 529 EUR
Sensor 2S Pro	all	all	649 EUR

\* suggested retail price. Pricing may vary.

## 6 YEAR PARTS AVAILABILITY

CORE kites are built to last. Our legendary durability is backed by a 6 year parts availability guarantee. We will stock all XR4 LW replacement parts for a minimum of six years from date of purchase.



## KITE INCLUDES

Custom backpack, 3m line extensions, manual and repair kit.

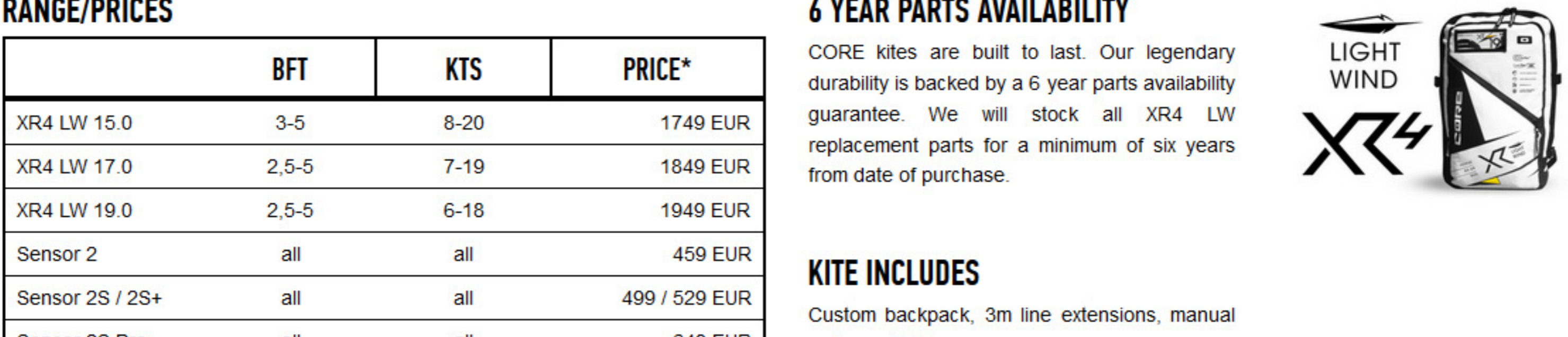
Available at your local retailer.

## COMPATIBILITY

The XR4 LW is fully compatible with the Sensor 2 and Sensor 2S bar system: [Sensor 2](#), [Sensor 2+](#), [Sensor Pro](#), [Sensor 2S/2S+](#) and [Sensor 2S Pro](#).



## RELATED PRODUCTS



XR4	FUSION 2 LW	FREE LW	GTS4 LW
Wanderlust Performance Freeride + Wave   Race	Unhalevitably agile Incredibly confident Freeride + Freestyle	Session Saver Wave + Freeride   Freestyle	Early Freshmint Ninja Freestyle + Wave   Freeride

## MORE ABOUT CORE

6 month extended warranty with product registration. <a href="#">Click here</a> for your chance to win!	6 year replacement parts availability	Global support
---	---------------------------------------	----------------



#COREKITES

KITES: XR4 | XR4 LW | Free | Free LW | GTS4 | GTS4 LW | Section | Section LW | Impact | Pump 2.0  
CONTROL BARS: Sensor 2 | Sensor 2S | Sensor 2S+ | Sensor 2S Pro  
TRIMMERS: Fusion 2 | Fusion 2 LW | Onyx 2 | BBE2 | SURFBARBERS: Roger 2 | 720 | Green Room  
SUPPORT: CORE CARE | Register | Product Guide | Manuals | Videos | FAQ | Newsletter | TRY BEFORE CORE Store Locator | CORE Store  
ABOUT: CORE Nation | International Pro Team | Blog | Contact | Terms & Conditions | Legal Information | Imprint

CORE Kiteboarding | Hiltl-Teufel GmbH &amp; Co KG | Am Steinhilp 28 | 22789 Burg | Fehmarn, Germany