

# FUSION 2

FREERIDE + FREESTYLE | WAVE

## ONE BOARD, ALL STYLES.

The new Fusion 2. The Swiss Army® knife of kiteboards. Always the right choice for your next epic session. Chop, glass or waves, it doesn't matter when you're riding the Fusion 2, the ultimate all style twin tip. Our latest model fuses the best design elements of freeride and freestyle kiteboards to create one that suits all styles and abilities from beginner to expert. It incorporates a decade's worth of board building expertise from Europe's leading custom board manufacturer, Carved.de.

### THE ALL-ROUNDER

The second generation Fusion. Refined. Capable. And now with Union Pro straps and pads. We engineer our boards with the finest materials and latest technology for maximum stoke factor. Our exclusive use of Cartan carbon, CNC milled wood cores, G10 fins and the following technologies create the unmistakable, smooth riding, energetic feel of the Fusion 2:



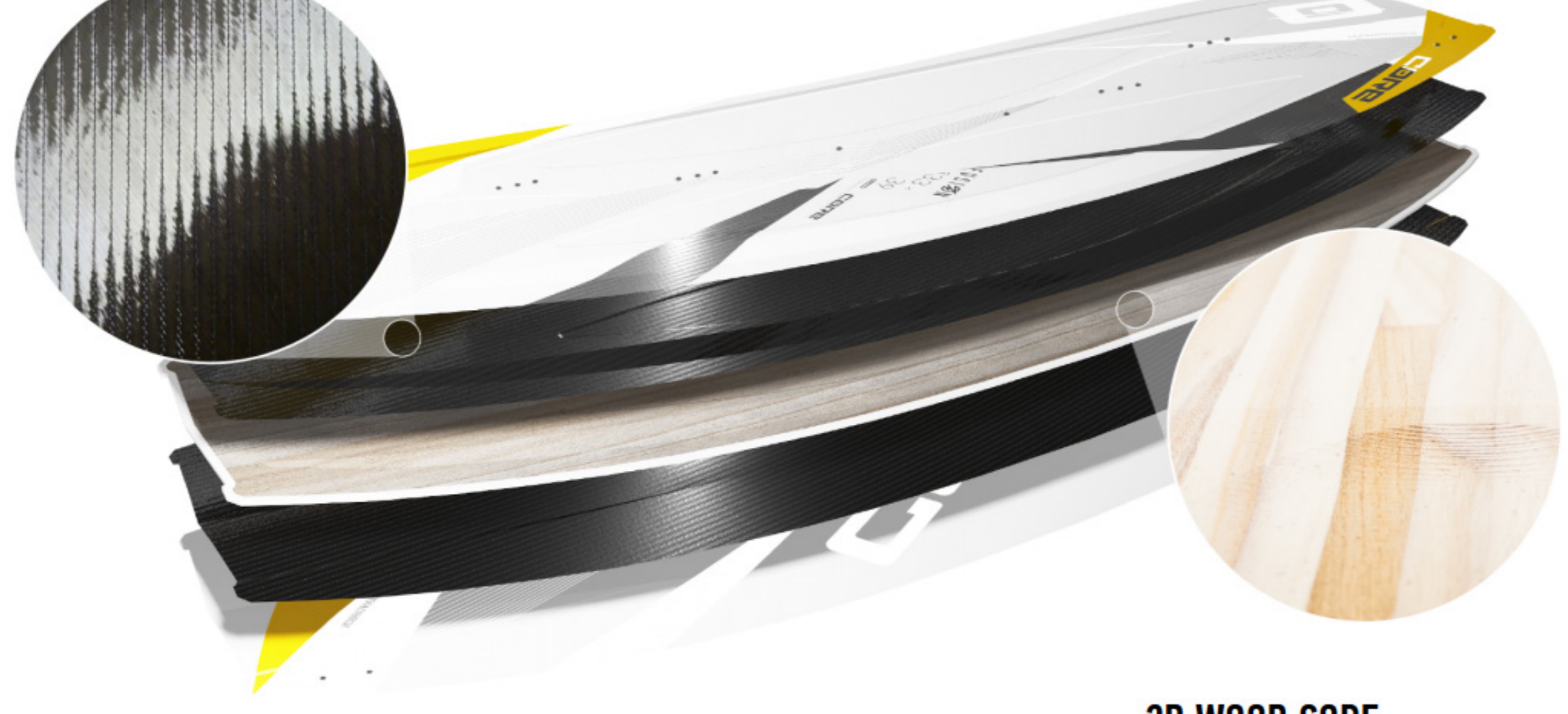
## FEATURES

- CARTAN® CARBON
- 3D WOOD CORE
- DIAMOND 3D-SHAPE
- PROGRESSIVE 2 CHANNEL TIPS
- HYDRODYNAMIC BOTTOM CONTOUR
- V-SHAPED KEEL
- DOUBLE CONCAVE
- G10 CUTBACK FINS (48MM)
- UNION PRO PADS & STRAPS
- UNION COMFORT PADS & STRAPS

## KEY FEATURE SNAPSHOT

### CARTAN® CARBON

Exclusive to CORE. Our proprietary 30° Biaxial carbon fiber weave optimizes board torsion and dynamic longitudinal flex. The build process also requires less resin thereby reducing swing weight. This means bigger pop and better durability. So go ahead and try that new move!



### 3D WOOD CORE

Powerfully light. CNC milled, wood core. The laminated, long grained Paulownia wood core gives our boards dimensional stability, decay resistance and a lightweight yet distinctively powerful character.

### DIAMOND 3D-SHAPE

Diamond shaped perfection. Take a close look at the Fusion's surface contours. Near the footpads, the surface is milled in the shape of a diamond. This shape directs torsional forces to the edges where you want them for a perfect balance between flex and rigidity.

### PROGRESSIVE 2 CHANNEL TIPS

Two progressive channels are found on each end of the Fusion 2. The channels engage when power edging, effectively increasing lateral resistance and control. And when not engaged, the board glides effortlessly through the tulls.



### HYDRO DYNAMIC BOTTOM CONTOUR

Optimized fluid dynamics balance the hull design principles utilized in the Fusion 2. A full length, double concave, V-shaped hull continues within extended progressive channels and blends perfectly into the tips. Experience the signature smoothness of the refined Fusion 2.

### V-SHAPED KEEL

Inspired by the legendary handling of deep V powerboats in rough waters, CORE integrates a V-shaped keel along the entire length of the board to penetrate chop and smooth your ride. The V ensures early planing, superb agility and softer landings.



### DOUBLE CONCAVE

Always in control. The double concave V hull increases hydrodynamic grip at any board angle to rip tighter, butter smooth turns. Effortless, slushy turns that will be imprinted into your memory forever.

### G10 CUTBACK FINS (48MM)

A perfect balance between tracking and freestylin' magic. The impact resistant, G10 fiberglass fins have a new trailing edge design for even more control and tracking stability. Although a little smaller than last year, we kept that lively feel of the original intact.



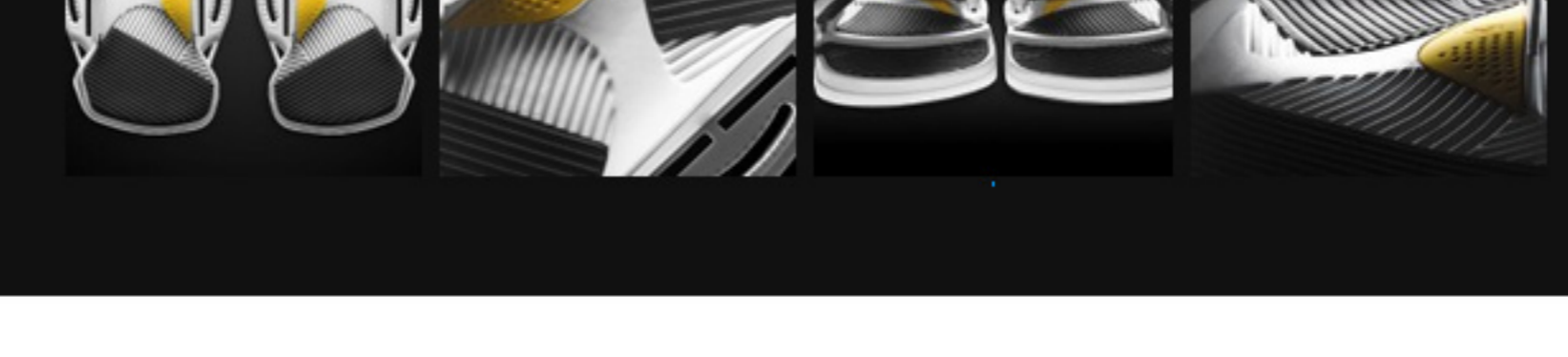
## ACCESSORIES

### CORE PADS & STRAPS



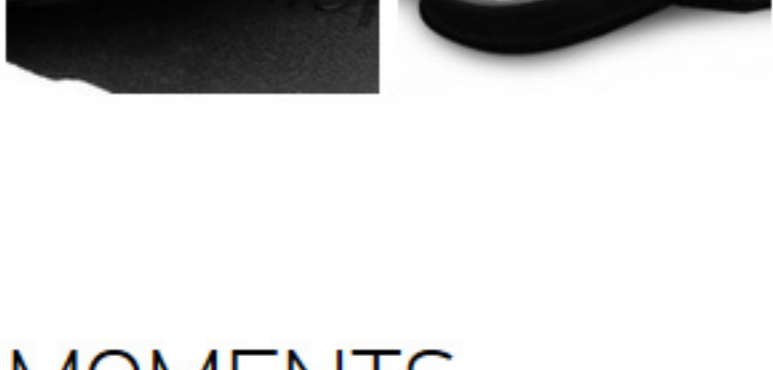
### UNION PRO

Upgrade to Union Pro pads & straps. With two adjustable Velcro straps and virtually unlimited adjustability, there is no better choice. The orthotic EVA footpads with its "toe grabber" 3D surface will hold your feet securely even on those off balance landings. With a base plate that can accommodate nine different stances and three pad insert options we are sure you will find the perfect setup for your riding style. Similar customization options are found with the CORE Union Pro straps to give you the perfect fit even with booties on! The dual strap design features effortless pitch, longitudinal and height adjustments to support your foot perfectly. We lined the strap interior with padded neoprene while protecting the exterior with durable synthetic leather.



### UNION COMFORT

Basic, yet essential for maximum stoke. The newly developed, ergonomic, shock absorbing, foot pad will give you the confidence to push your limits. The "Diamond Wedge EVA" memory foam, "toe grabber" footbed, and single Velcro strap will hold you firmly and comfortably in all conditions.



## MOMENTS



## STYLEFINDER + SKILL LEVEL

	FUSION 2	CHOICE 2	BOLT 2
Freeride   Easy Riding	●●●●●○	●●●●○	●●●●○
Big Air	●●●●●○	●●●●○	●●●●○
Freestyle (hooked)	●●●●●○	●●●●●○	●●●●○
Waakestyle (unhooked)	●●●●○	●●●●●	●●●●●
Comfort   Control	●●●●●○	●●●●●○	●●●●●○
Carving	●●●●●○	●●●●○	●●●●○
Wave	●●●●○	●●●●○	○●○●○

### RANGE/PRICES

	SIZES	PRICE*
Fusion 2	133x39 135x40 137x41 139x41,5 141x42 144x43	849 EUR
Fusion 2 LW medium	147x44	849 EUR
Fusion 2 LW large	152x46	849 EUR
Union Comfort pads & straps		99 EUR
Union Pro pads & straps		149 EUR

### DELIVERY INCLUDES

Fusion 2, grab handle, G10 cutback fins (48mm), VAA screws (to attach fins)



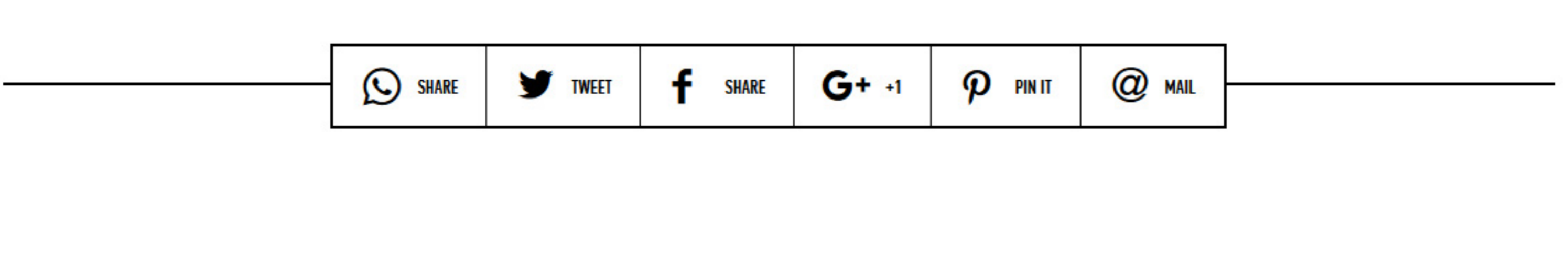
### ACCESSORIES

Union Comfort pads & straps  
Union Pro pads & straps

- CORE Support
- CORE Store
- Fusion 2 Video

\* suggested retail price. Pricing may vary.

### FUSION 2 SIZES



## RELATED PRODUCTS

<b>FUSION 2 LW</b> Freeride +   Freestyle	<b>XR4</b> Performance Freeride +   Wave   Race	<b>FREE</b> Wave +   Freeride   Freestyle	<b>SENSOR 2S/2S+</b> Unibody 4-Line Bar with S-System

### MORE ABOUT CORE

- 6 month extended warranty with product registration. [Click here](#) for your chance to win!
- 5 year replacement parts availability
- Global support