

GTS3 LW

FREESTYLE + WAVE | FREERIDE

EARLY FREESTYLIN' NINJA

For those who want to get the most out of a marginal day. Like its smaller siblings, the GTS3 LW carries over much of the 3 strut design to retain its agile, freestyle character. The perfect partner for those not so perfect days. Delivering enough pop for you to lay down some moves while everyone else is mowing the lawn.

THE UNDISPUTED LIGHTWIND FREESTYLE CHAMP.

The GTS3 LW gives a playful and freestyle type ride. The LW is not just a scaled up version of the GTS3 and although the kite has been designed around the light weight three strut chassis and technology of its smaller siblings, there are fundamental changes, such as a lower profile, rounder tips, thinner tubing and the use of CORE's patented light weight material CoreTex Light.



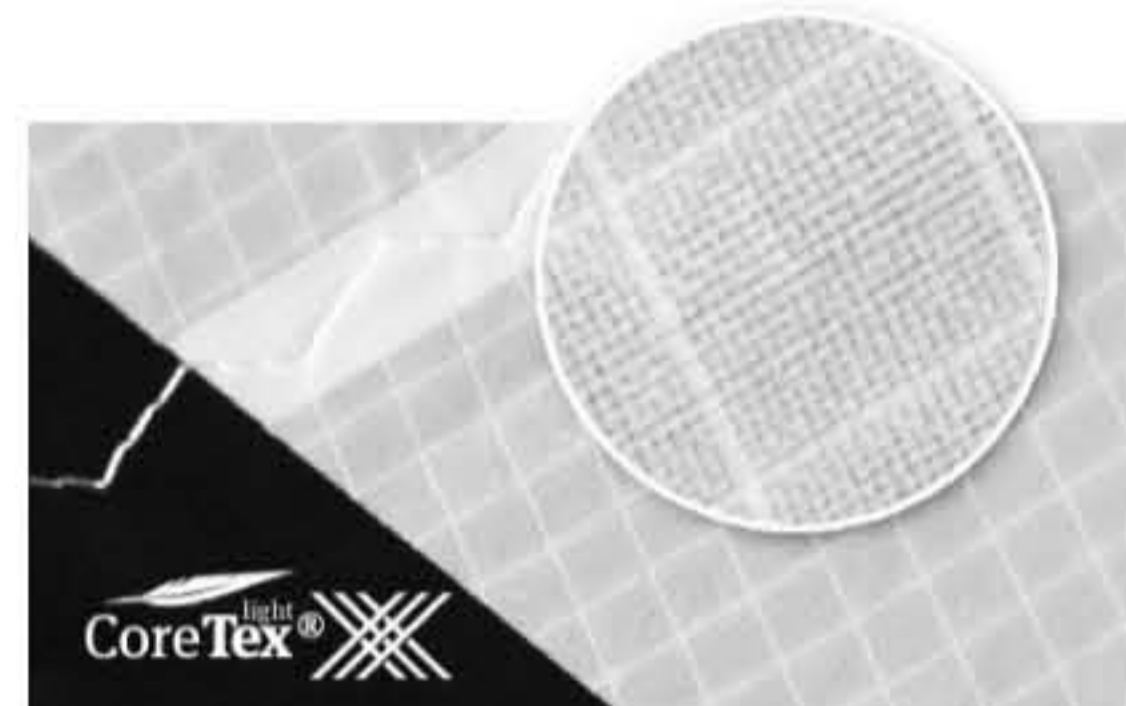
FEATURES

- 3 STRUT FRAME
- CORETEX® LIGHT
- SPEED PROFILE
- SLIM STRUTS
- ULTRA LIGHT WINGTIPS
- SPEED PUMP SYSTEM
- SPEED VALVE 2

KEY FEATURE SNAPSHOT

3 STRUT FRAME

Every gram counts. Especially in marginal wind. The GTS3 LW shares the same light weight, three strut design as its smaller brothers. A design that promotes more twist and faster turn initiations.

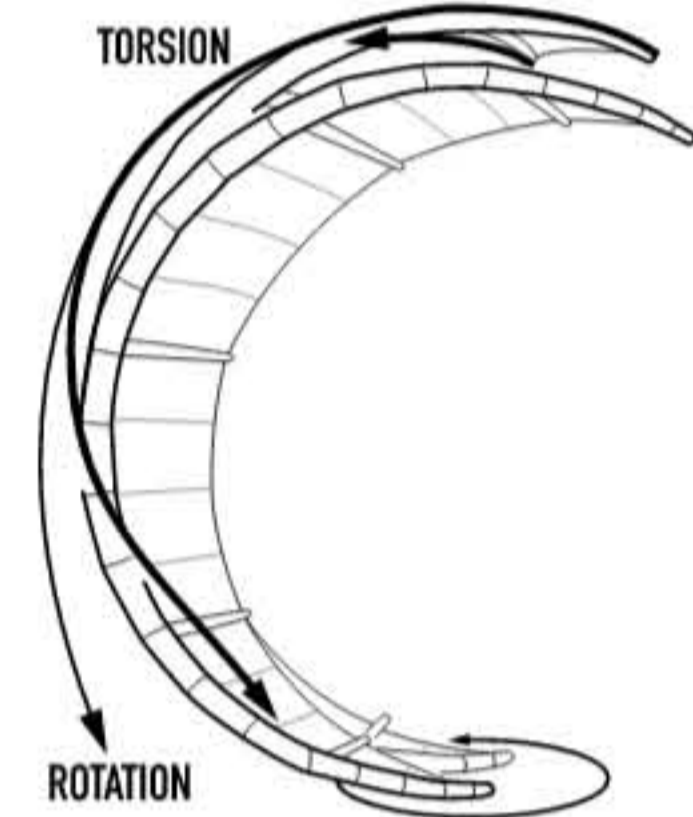


CORETEX® LIGHT

Exclusive to CORE. Just a little lighter. Our, industry leading, ripstop canopy fabric is just as durable as the original CoreTex yet sets new benchmarks in breaking strength, tear resistance, longevity and UV protection. Feel the tight, crisp signature only a CoreTex Light kite delivers.

SPEED PROFILE

The GTS3 LW edition incorporates a flatter wing profile to reduce wind resistance and unwanted lateral pressure. A more efficient and aerodynamic kite profile can generate more apparent wind and thereby create more lift and power. Fly faster. And fly earlier with the LW edition.

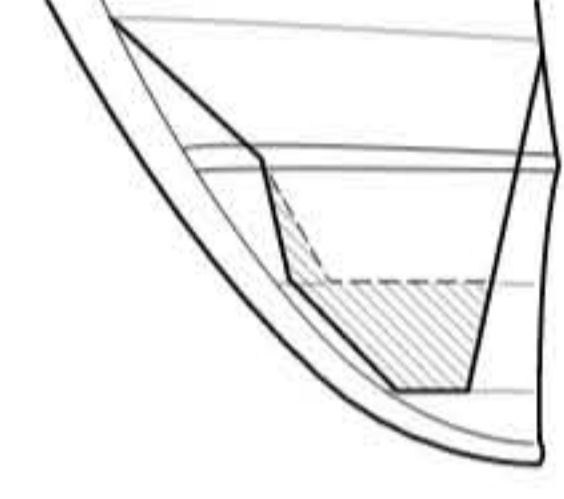


SLIM STRUTS

The GTS3 features thinner struts than its' siblings. Slimmer struts reduce weight and translate bar commands into action more quickly.

ULTRA LIGHT WINGTIPS

The GTS3 LW features reduced Dacron leading and trailing edge designs with the exception of the areas in contact with the beach when launching and landing. Those areas are particularly robust and designed to take a beating.

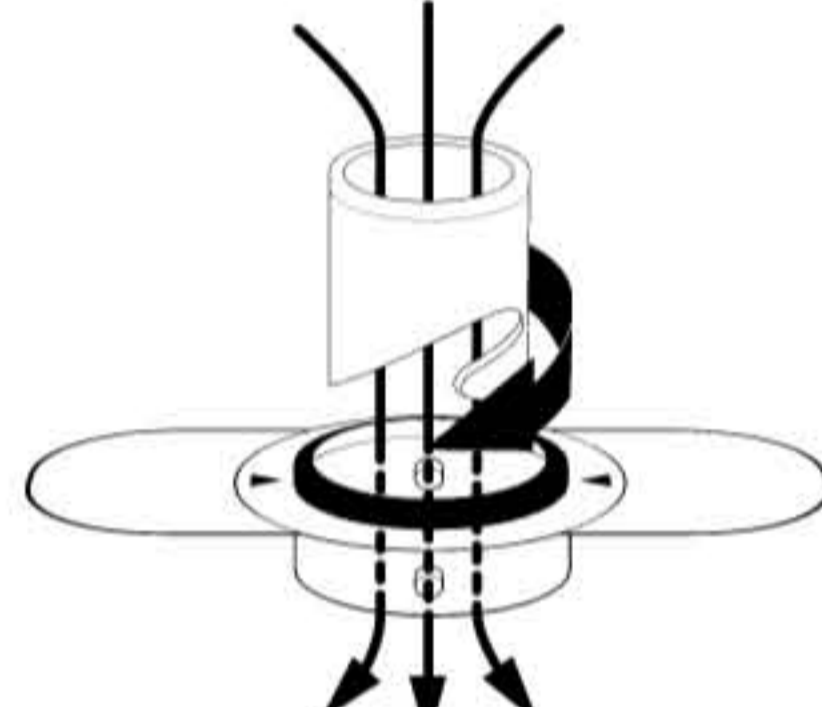


SPEED PUMP SYSTEM

Supersonic inflation! We re-routed the speed-pump strut distribution hoses to make air flow faster into the struts. We did this for you because we know how much you enjoy inflating your kite.

SPEED VALVE 2

No special hose adapter needed here! The Speed Valve 2 connects directly to any standard 20mm OD twist lock pump hose. The Speed Valve 2 maximizes airflow, minimizes inflation times and noticeably reduces pump pressure. This inflation/deflation system is so good you may even leave your electric pump at home.



MOMENTS



STYLEFINDER + SKILL LEVEL

| | GTS3 | XR4 | FREE | SECTION | IMPACT |
|------------------------|-------|--------|--------|---------|-----------|
| Freeride Easy Riding | ●●●●○ | ●●●●●● | ●●●●●● | | |
| Big Air Hangtime | ●●●●○ | ●●●●●● | ●●●●●● | | |
| Freestyle (hooked) | ●●●●○ | ●●●●●● | ●●●●●● | | |
| Wakestyle (unhooked) | ●●●●○ | ●●●●○ | ●●●●○ | WAVE | WAKESTYLE |
| Kite-loops | ●●●●○ | ●●●●○ | ●●●●○ | | |
| Wave | ●●●●○ | ●●●●○ | ●●●●○ | | |
| Race Upwind | ●●●●○ | ●●●●●● | ●●●●○ | | |

RANGE/PRICES

| | BEAUFORT | KNOTS | PRICE* |
|-------------------|----------|-------|---------------|
| GTS3 LW 15.0 | 3-5 | 9-20 | 1649 EUR |
| GTS3 LW 17.0 | 2.5-5 | 8-19 | 1749 EUR |
| Sensor 2 / 2+ bar | all | all | 459 / 489 EUR |
| Sensor Pro bar | all | all | 599 EUR |

6 YEAR PARTS AVAILABILITY

CORE kites are built to last. Our legendary durability is backed by a six year parts availability guarantee. We will stock all XR4 LW replacement parts for a minimum of six years from date of purchase.



KITE INCLUDES

Custom backpack, 3m line extensions, manual and repair kit.

COMPATIBILITY

The GTS3 LW is fully compatible with the Sensor 2 bar, Sensor Pro bar and Sensor bar.

- > GTS3 LW Support
- > CORE Store



RELATED PRODUCTS

FUSION 2 LW
Unbelievably agile - Incredibly confident
Lightwind Freeride | Lightwind Freestyle

XR4 LW
Big Air Machine
Performance Freeride + | Wave | Race

SECTION LW
Small Wave Warrior
Wave

MORE ABOUT CORE

- 6 month extended warranty with product registration. [Click here](#) for your chance to win!
- 6 year replacement parts availability
- Global support



#COREKITES